

A multi-purpose system offering emergency management support when planning for or responding to an outbreak

THE CHALLENGE

A high-consequence animal disease outbreak in the United States would cause major disruptions to commerce and trade - resulting in significant economic losses. More informed emergency response efforts can help mitigate spread of a disease and minimize disruptions to the normal business cycle for livestock, poultry and associated animal products that is likely to occur during an outbreak, allowing more efficient restoration of normal business operations, movement and trade.

Key to being resilient and coping with the dynamic nature of an evolving animal disease emergency is being able to take advantage of information technology to provide timely and relevant information/data to decision makers. The resulting information system solution needs to support customized data and capability access based on the activities and types of decisions to be made.

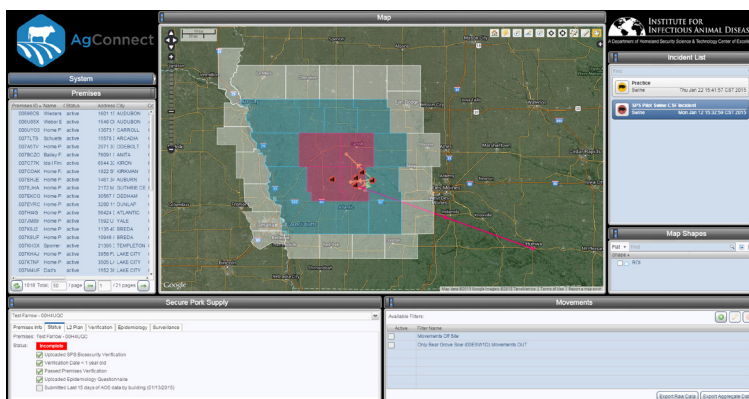
THE SOLUTION

The Institute for Infectious Animal Diseases, in partnership with the Texas Center for Applied Technology, a part of the Texas A&M Engineering Experiment Station, developed AgConnect® ResponseNet, a platform for use by State Animal Health Officials and the U.S. Department of Agriculture's Animal and Plant Health Inspection Service.

AgConnect® ResponseNet provides a web-based solution to support planning and decision making for incident management and business continuity operations. It also allows integration of real-time information - including animal demographic, production and health, and location and resource related data - to support surveillance, continuity of operations and response management. AgConnect® ResponseNet allows for visualization and geospatial and temporal analysis of the aggregated data from multiple information streams.

A multi-purpose system, AgConnect® ResponseNet enables more rapid and informed decision making, facilitating actions needed for emergency response and business continuity. The system can be used for operations during response, for analysis after an event is complete, and for training to prepare for possible future incidents - making it a pivotal tool for both day-to-day operations and incident response.

Can be used as an operational tool during response, an analysis tool after an event and as a training tool to prepare for possible future incidents.



Contact

Matt Cochran, DVM, MIA
Program Director
Institute for Infectious Animal Diseases
979.845.2855
Matt.Cochran@ag.tamu.edu